

Bluetooth Power Point 2 Channel Remote

Operate two outlets Independently

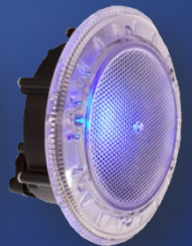
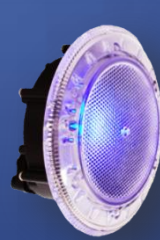
Up to two devices can be controlled from one remote

Device does not have to be in direct line of sight to operate.

Can be controlled from within 50m.

Maximum load 10A 2400W
Weatherproof IP53

Equipment



A white remote control with a Bluetooth logo and a power point outlet. The remote has buttons for 'All', 'Select', and 'V'. The Bluetooth logo is a blue oval with a white symbol. Below the logo, the text 'Bluetooth Power Point' is written in a stylized font. At the bottom, the 'evolution WATER & LIGHTING SOLUTIONS' logo is displayed.

NEW

Evolution Water and Lighting Solutions

27/30 Mudgeeraba Road Worongary QLD 4213

Phone: 07 5565 0000

Fax: 07 5565 0010

www.evolutionwls.com.au